



Hospital Improvements



Match the problem to the solution that Florence Nightingale found.

Problem:

The hospitals didn't have enough supplies to look after the soldiers.

Problem:

The soldiers didn't have enough food.

Problem:

The hospitals didn't have enough medicine and bandages.

Problem:

The soldiers weren't looked after very well.

Problem:

The soldiers didn't have clean clothes.

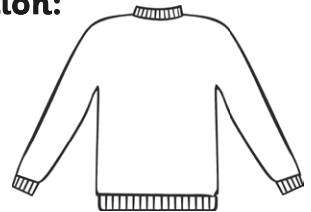
Problem:

The hospitals were very dirty.

Solution:



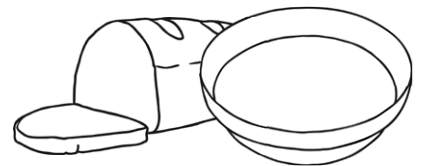
Solution:



Solution:



Solution:



Solution:



Solution:





Hospital Improvements



Look at the picture above. Explain what the problems were at the hospital and how Florence Nightingale solved them.
