

Book Knowledge Organiser – Portraits

Significant Artists

Albrecht Dürer



Albrecht Dürer (1471–1528) was born in the Franconian city of Nuremberg. A supremely gifted and versatile German artist of the Renaissance period. Printer, painter and theorist. Dürer revolutionized printmaking, elevating it to the level of an independent art form. He expanded its tonal and dramatic range, and provided the imagery with a new conceptual foundation.

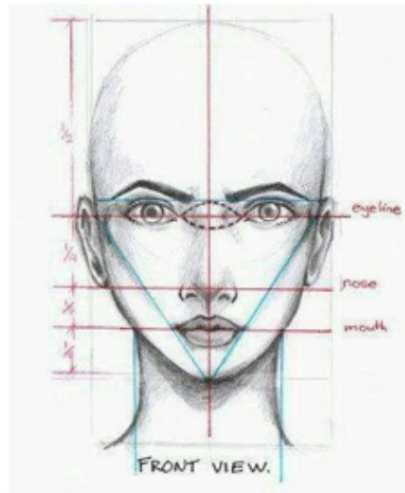
Hans Holbein



Holbein was born in Augsburg in southern Germany in the winter of 1497-8. He was taught by his father, Hans Holbein the Elder. Hans Holbein the Younger was a German painter and printmaker who worked in a Northern Renaissance style. Holbein was one of the most accomplished portraitists of the 16th century. He spent two periods of his life in England (1526-8 and 1532-43), portraying the nobility of the Tudor court. Holbein was a highly versatile and technically accomplished artist who worked in different media. He also designed jewellery and metalwork.

Key Vocabulary

Renaissance	A period in European history, covering the span between the 14th and 17th century.
Spatial depth	To create the illusion of depth (3D) on a flat (2D) surface.
Textile	A type of cloth or woven fabric.
Collaborative	Two or more parties working together.
Shape	The external form, contours, or outline of someone or something.
Form	The visual shape of something.
Tonal variation	Tonal value is how dark or light a colour is. <u>Tonal</u> value of a colour can be changed by adding black or white.



My target for this topic is: _____

Have I met this target? (Y/N) _____

Monday 6th October 2025

LI: To understand style and features of work from the 16th century as well as express views and opinions about artist's work.

Why this?

Why now?

Reading activity

Albrecht Durer

Albrecht Durer (1471—1528) was born in the Franconian city of Nuremberg. He was an extremely gifted and versatile German artist of the Renaissance period. A painter, printer and theorist, Durer was revolutionary. He changed the world of printing making, elevating it to the level of an independent art form. He expanded its tonal and dramatic range, and provided the imagery with a new conceptual foundation.

Hans Holbein

Holbein was born in Augsburg in southern Germany, in the winter of 1497-8. He was taught by his father, Hans Holbein the Elder. Holbein the Younger was a German painter and printmaker who worked in a Northern Renaissance style, and was one of the most accomplished portraitists of the 16th century. He spent two periods of his life in England (1526—8 and 1532—43), portraying the nobility of the Tudor court. Holbein was a highly versatile and technically accomplished artist who worked in different media (He also famously designed jewellery and metalwork).

What do you think of the style of painting?

What do all the portraits have in common?



What colours have been used and why do you think this is?

What do you like about each of the artists work?

What do the artists have in common and what is different about their work?

Whose work do you like the best and why?



Holbein

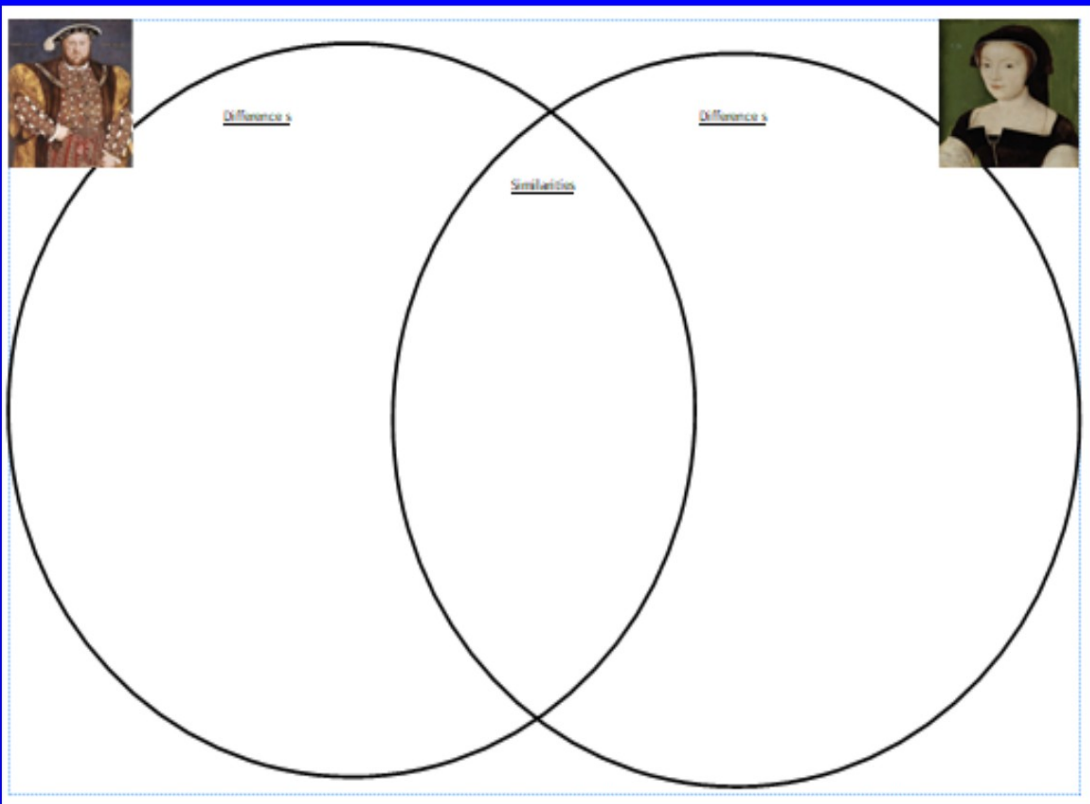


Dürer

Task:

To complete a comparison between the two artists. What is different and what is the same?

Think about colours, techniques, textures etc.



Reflection

What BLPs have you used?



In this lesson I have been _____ and
I need more help with _____



In this lesson I have been _____ and
I am starting to understand _____



In this lesson I have been _____ and
I feel I understand _____

Fix-It Five

Edit, correct, answer!



- Spellings
- Punctuation
- Homophones
- Common exception words
- Red pen comments

Monday 13th October 2025

LI: To understand that processes of colour mixing can create different effects.

LI: To know how materials can be used to create tonal variation.

STEM Careers: Colour Technologist



Attributes:

Creative, organised, attention to detail.

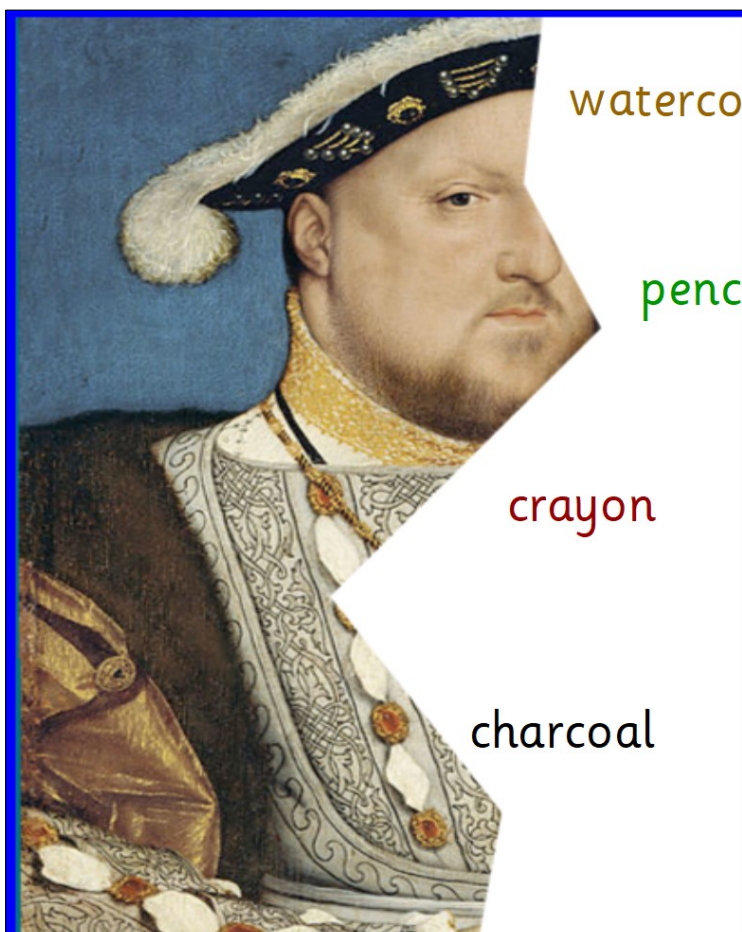
Could you be a Colour Technologist?

A colour technologist uses the science and technology of colour application and its subsequent performance. They are responsible for developing and producing dyes and pigments for manufacturing areas such as textiles, paints and inks for printers. Colour technologists can be involved in all stages of the production process, from design to testing and marketing. Work may include developing new dyes and pigments to provide specified colours, monitoring colour reliability during production, testing the colourfastness and stability of dyes and pigments under simulated conditions over typical lifespans and refining processes for the production of dyes and pigments to save costs and minimise environmental impact.

1. What does a colour technologist use?
2. What are they responsible for?
3. What might their work include?

Why this?

Why now?



watercolours

pencil

crayon

charcoal



Annotate this picture of Henry VIII on the paper. Use the different colours and materials to find the perfect shades for this portrait.

Your annotations should be set out similar to the picture above.



Similarly, annotate this picture of Edward on the paper by mixing the colours provided to get as close as you can to the different colours of the picture. Your annotations should be set out similar to the picture above.

Reflection

What BLPs have you used?



In this lesson I have been _____ and
I need more help with _____



In this lesson I have been _____ and
I am starting to understand _____



In this lesson I have been _____ and
I feel I understand _____

Fix-It Five

Edit, correct, answer!



- Spellings
- Punctuation
- Homophones
- Common exception words
- Red pen comments

Wednesday 15th October 2025

LI: To improve mastery of art and design techniques including drawing.

Why this?

Why now?

Reading activity

Colour

There are 3 primary colours: red, yellow and blue. Mixing 2 primary colours together creates a secondary colour: orange, purple or green. Tertiary colours are created by mixing a primary and secondary colour together. A colour wheel can be used to show which colours are harmonious when placed together.

Warm colours are red, and include oranges, yellows and browns. Cold colours are blue and include greens and violets. Black, white and grey are neutral colours.



Line



A line is a mark that is longer than it is wide. A line could be created using materials such as a pencil, pen or a brush dipped in ink. A line can be straight or curved. It can be horizontal, vertical or diagonal, and can change in direction.

Tone

The tone of something refers to how light or dark it is. Areas with lots of light are called highlights, and darker areas are called shadows. There are a range of tones in between. Shading can be used to create different tones in a drawing.



colour		The property possessed by an object of producing different sensations on the eye as a result of the way it reflects or emits light.
line		The general effect of colour or of light and shade in a picture.
tone		Coming after, less important than, or resulting from someone or something else that is primary.
primary		A mark that is longer than it is wide.
secondary		Earliest in time or order.
tertiary		Pale grey, cream, or beige.
harmonious		Forming a pleasing or consistent whole.
neutral		A set of different things of the same general type.
range		Third in order or level.

Let's go through as a class...

colour		The property possessed by an object of producing different sensations on the eye as a result of the way it reflects or emits light.
line		The general effect of colour or of light and shade in a picture.
tone		Coming after, less important than, or resulting from someone or something else that is primary.
primary		A mark that is longer than it is wide.
secondary		Earliest in time or order.
tertiary		Pale grey, cream, or beige.
harmonious		Forming a pleasing or consistent whole.
neutral		A set of different things of the same general type.
range		Third in order or level.

Skill of the term - drawing noses



We are going to follow a step-by-step video on how to create a nose.

Reflection

What BLPs have you used?



In this lesson I have been _____ and
I need more help with _____



In this lesson I have been _____ and
I am starting to understand _____



In this lesson I have been _____ and
I feel I understand _____

Fix-It Five

Edit, correct, answer!



- Spellings
- Punctuation
- Homophones
- Common exception words
- Red pen comments

Monday 13th October 2025

LI: To know how to draw a portrait using combined elements of colour, line and tone to create spatial depth and shape form.

Why this?

Why now?

Use what you now know about portraits in Tudor times.

Annotate the portrait of Henry VIII thinking about what his portrait tells you about him as a person.

clothing

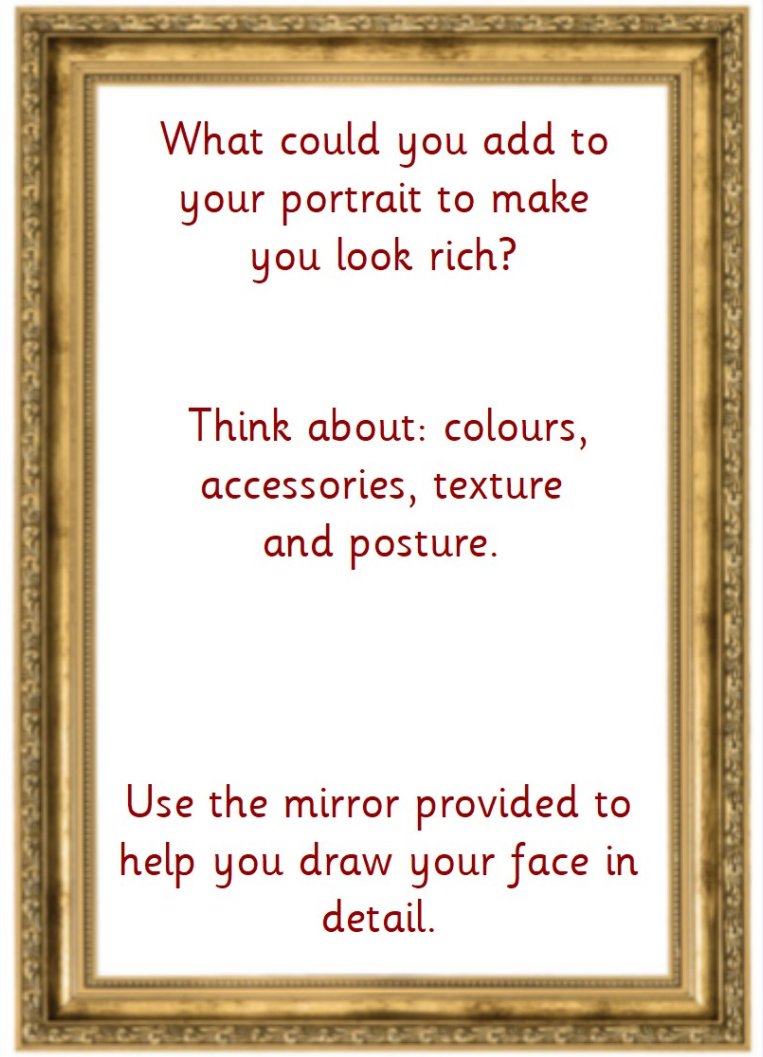
colours used

posture

accessories - did you know gloves were a sign of wealth in Tudor times?

Jewels





What could you add to
your portrait to make
you look rich?

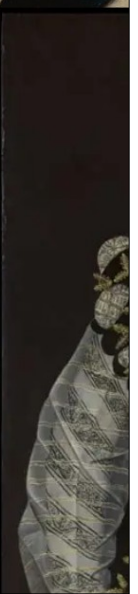
Think about: colours,
accessories, texture
and posture.

Use the mirror provided to
help you draw your face in
detail.

Draw your self
portrait inside the
frame provided.

Use the portraits from
Tudor times and
everything you have
learnt to make
yourself look as
Tudor as you can -
remember you need
to look wealthy!





Reflection

What BLPs have you used?



In this lesson I have been _____ and
I need more help with _____



In this lesson I have been _____ and
I am starting to understand _____



In this lesson I have been _____ and
I feel I understand _____